



**PRODUCT BENEFITS**

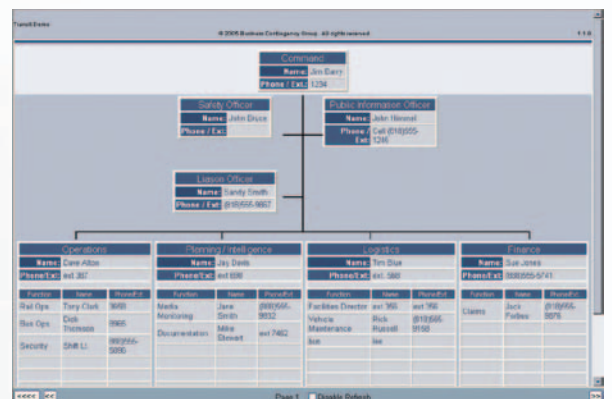
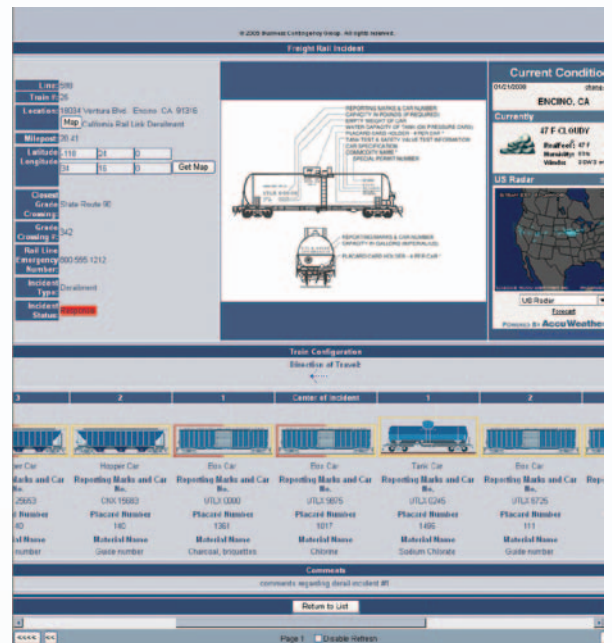
- *Manage and share real-time information* to ensure high-level coordination and response to an incident, whether it is a surface transportation (ST) emergency or a non-ST emergency
- *Addresses the TSA/FTA Security and Emergency Management Action Items* for Transit Agencies
- *Supports Department of Homeland Security* as well as FTA standards and protocols for emergency response procedures
- *Allow remote access* to a few people or hundreds of authorized users worldwide
- *Affordable, easy to use and powered* by the industry-leading WebEOC®
- *An Exclusive Provider of WebEOC ST*, BCG offers a full range of end-to-end services and solutions

**WebEOC® ST and BUSINESS CONTINGENCY GROUP**  
**Improving security and homeland defense through real-time emergency management in the Surface Transportation sector**

**MEETING THE CHALLENGE**

The security of today's surface transportation (ST) systems – from rail and freight transportation to public transit systems – is critical to America's economy, homeland defense and quality of life. Following the events of September 11, 2001, the bombings of passenger rail systems in Madrid, London, and Mumbai underscore the threats and vulnerabilities associated with public transportation. As a result of these incidents, transportation agencies have pursued innovative and effective operational strategies in the ST sector should a national emergency occur.

To help support this goal, Business Contingency Group (BCG) designed WebEOC ST software. WebEOC ST builds upon the features of WebEOC – the industry-leading Crisis Information Management Software (CIMS) developed by ESI – and adds functionality specifically designed for the Surface Transportation sector.



## KEY ST SUPPORT AREAS

- **Passenger Rail Incidents** – Now you can capture and provide detailed up-to-date information on any incident involving passenger trains, whether commuter rail, intercity trains, heavy rail or light rail and even monorails – in real time. Rail Car Data Sheets provide information and schematics on specific passenger rail cars.
- **Freight Rail Incidents** – You can capture and provide detailed up-to-date information on freight incidents, enabling decision-makers to quickly coordinate the proper response.
- **Transit** – You have immediate access to many emergency responses procedures and protocols established by the Federal Transit Administration (FTA).
- **Highway/Trucking** – Like rail agencies, Highway/Trucking can capture and provide real-time information on incidents, in addition to collecting real-time, actionable traffic impact data – from weather and construction, for example. Support includes a wide range of traffic and travel information affecting time-critical deployments for both private companies and public agencies for better situational awareness.

## ADDRESSES TSA/FTA SECURITY AND EMERGENCY MANAGEMENT ACTION ITEMS FOR TRANSIT AGENCIES

WebEOC *ST* addresses many of the action items identified by the Federal Transit Administration (FTA), Department of Homeland Security's Transportation Security Administration (TSA) and Office of Grants & Training (OGT):

- **Coordinate Security and Emergency Management Plan(s) with local and regional agencies.** WebEOC *ST* not only provides Incident Command System (ICS) forms but also includes an interactive ICS organization chart. ICS forms part of the standard framework for the National Incident Management Systems (NIMS). WebEOC *ST* can also act as a hub to share information.
- **Establish plans and protocols to respond to the DHS Homeland Security Advisory System (HSAS) threat levels.** FTA Security and Emergency Management Protective Measures for Transit Agencies have been included in the system as a checklist that can track the status of each protective measure.
- **Conduct Tabletop and Functional drills.** WebEOC *ST* includes a Drill Simulator that allows the automation of exercises and drills-saving resources. A pre-scripted Exercise/Drill library to run with the Drill Simulator is included. Features include automatically injected scenario messages, master sequence of events list (MSEL), maps and diagrams, incident photos, and support material such as bill of lading and manifests.
- **Participate in an information sharing process for threat and intelligence information.** WebEOC *ST* can be used to share information during normal operations and emergencies.

## ADDITIONAL ST SUPPORT

- WebEOC *ST* automates the Transportation Systems Resources Capabilities worksheet found in the FTA document "The Public Transportation System Security and Emergency Preparedness Planning Guide."
- WebEOC *ST* supports the Emergency Support Functions (ESF), including ESF 1 – Transportation.
- Also included are transit specific icons for use with MapTac™, WebEOC *ST*'s tactical mapping utility.

## SHARE RESOURCES WITH FIRST RESPONDERS

Should an emergency occur, public transit agencies often have the resources to assist first responders but are not able to quickly coordinate that support. With WebEOC *ST*, transit agencies can immediately identify and communicate the resources that they have available to support community response in an emergency.

## THE POWER OF WEBEOC

As the world's first Web-based emergency management communications system, WebEOC – on which the ST module resides – is designed to deliver real-time emergency information sharing. By linking local, state, federal, volunteer, private and even worldwide sources together, WebEOC helps to facilitate coordination and decision-making for planning, training and emergency response, recovery and continuity of government and business operations.

## BCG – ONESTOP CRISIS MANAGEMENT

Business Contingency Group is one of the nation's leading hazard mitigation, preparedness, response and recovery organizations. With our OneStop approach to crisis management, we can deliver a full range of end-to-end solutions, consulting services and software products to communities, businesses and EOCs throughout North America and around the globe.

---

## WE'RE HERE TO HELP

With just one phone call, we can help you develop a comprehensive hazard mitigation, preparedness, response and recovery strategy. For more detailed information about how WebEOC *ST* and other BCG solutions can benefit your organization, call us today or visit our website.

---



ESI, WebEOC, and MapTac are either registered trademarks or trademarks of ESI Acquisition, Inc.